



# IRISITY AND GENETEC JOINT SOLUTION BRIEF



COMBINING BEST-IN-CLASS VIDEO MANAGEMENT  
WITH ADVANCED VIDEO ANALYTICS

## OUR PARTNERSHIP

Irisity partners with Genetec to offer end-to-end intelligent video surveillance solutions for real-time detections and alerts, video investigation and business intelligence. Irisity's IRIS+ video analytics is seamlessly integrated with Genetec's Security Center platform. This integration enables joint customers to receive, display and manage IRIS+ advanced capabilities, including real-time events, post-event investigation and business intelligence reports within Security Center.

ACCURACY AND RELIABILITY

## LEADING THE WAY

IRIS+ is Irisity's feature-rich AI-powered video analytics software platform that represents the future of video intelligence. IRIS+ delivers a broad set of highly sophisticated video analytics capabilities for enhanced security and safety. Available as a cloud-based SaaS or as an on-premise software, IRIS+ offers capabilities that meet the evolving needs of Genetec customers. Its scalable architecture scales to address any number of cameras across multiple distributed sites, while offering the most attractive TCO.



### ADVANCED ACCURACY

Through the IRIS+ and Genetec integration, investigations are completed within Genetec Security Center client application, enabling retrieval of relevant video and security data from the original recorded video based on customized user-defined queries.



### COMBINED FEATURES

End users benefit from operating with a single client application. Additionally, an intuitive process enables users to receive events with a variety of analytics from multiple cameras and manage AI events with real-time search and video recordings of specific events.

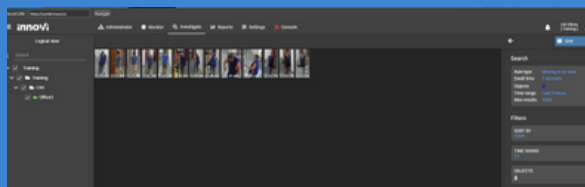
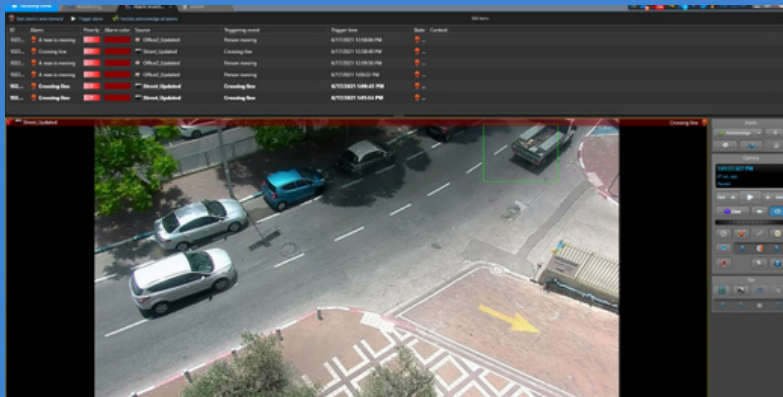


### ONE SOLUTION

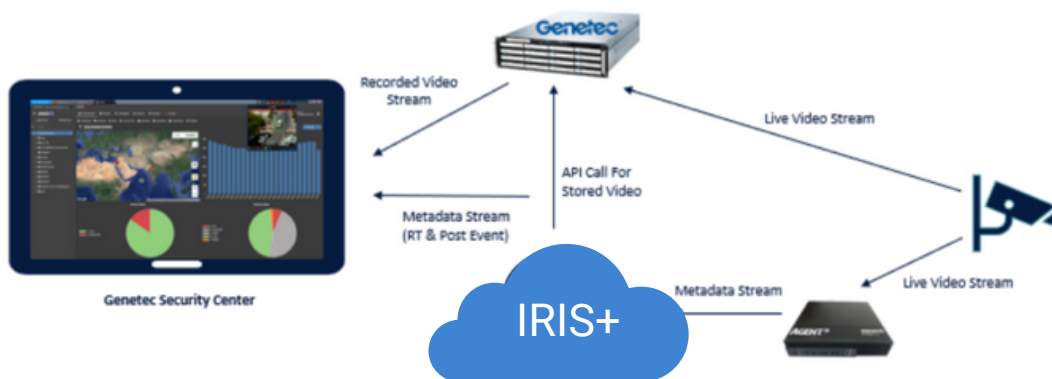
By integrating with Genetec Security Center, customers gain a full range of AI capabilities on every camera connected to the system. Real-time detections from video sources are sent to Security Center, allowing full event management with Security Desk.

# INTEGRATION IN ACTION

To the left, Irisity IRIS+ real-time alerts integrated with Genetec Security Center. Below, a look at Irisity's investigation embedded and running on Security Center



## How does it work?



## IRIS+ ADVANTAGES

Irisity has optimized IRIS+ to work seamlessly with a wide range of Genetec features and developed customized integrations to ensure a seamless connection with Genetec technologies.

A longtime Genetec partner, Irisity has developed an AI-powered video analytics solution that is used in a variety of global and mission-critical deployments.

IRIS+ offers capabilities that meet the needs of a wide variety of Genetec customer requirements. IRIS+ is designed to provide high service availability, full redundancy, seamless automated backups and upgrades, and 24/7 network and camera health monitoring.

### Lowest TCO

Distributed architecture combined with deep-learning implementation over Intel CPUs results in a highly cost efficient solution.



### Cloud or On-Premise

In addition to its on-premise software deployment and licensing models, IRIS+ is also available as a cloud-based SaaS.



### Robust and Open

Irisity's solutions operate with a wide variety of third-party security solutions and a broad feature set in a single platform.

